

KINCROME



**POWER TOOLS
FIRST RELEASE
PRODUCT GUIDE**



KINCROME PT18 RANGE



INTRODUCING PT18 POWER TOOLS

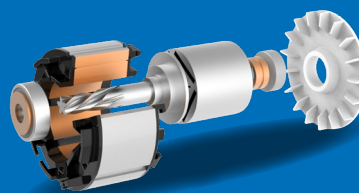
We've been designing, engineering & selling hand tools trusted by trade professionals around Australia for over 4 decades. Whether you're near the red dust or blue seas, you'll find us in a tradies tool kit. We're Australian family owned and operated too, meaning we know the country like the back of our hand.

Just like our hand tools, Kinchrome's range of PT18 18V Power Tools are designed and developed specifically for the trade professional.

Work with freedom around your workshop - No cords means these tools can go wherever you can with great mobility, less limitations & fewer tripping hazards.

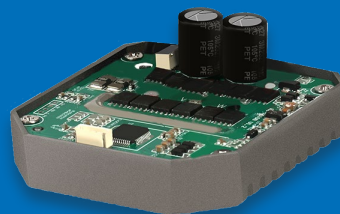
The Kinchrome PT18 18V Battery Chargers suit all Kinchrome PT18 18V Batteries and are designed to stand up to harsh workshop environments. With 2, 4 & 6 Ah batteries on offer, not only do our tools pack a punch, they go the distance too.

Backed by a 5 year trade warranty* on all skins, the PT18 range is ready for the trade.



BRUSHLESS POWER

Powerful brushless motor



PRECISE CONTROL

Heavy-duty controller actively monitors tool & battery



HEAVY DUTY BATTERIES

Up to 6Ah including Active cell monitoring & discharge protection



KINCROME PT18

18V Brushless Hammer Drill

100 Nm

K23010

18V POWER **5 YEAR WARRANTY**
3 YEAR STANDARD
 +2 FURTHER YEARS WHEN
 REGISTERED ONLINE

Features

- > 2 Speed gearbox
- > Variable speed trigger
- > LED light
- > Works with all PT18 Batteries
- > Heavy-duty brushless controller actively monitors tool & battery
- > Ergonomic design with durable TPE overmould

Contents

- > 18V Brushless Hammer Drill
- > Auxiliary handle
- > Belt hook
- > Manual

Specifications

Voltage	18VDC
Keyless Chuck Size	13mm
Torque Settings	23
Max Torque	100Nm
Wood Drilling Capacity	32mm
Steel Drilling Capacity	13mm
Masonry Drilling Capacity	16mm
No Load Speed 1/2	0-500 RPM/0-1,750 RPM
Impact Rate 1/2	0-8,500 BPM/0-29,750 BPM
Weight (No Battery)	1.68kg

KINCROME PT18

18V Brushless 1/4" Impact Driver

225 Nm

K23015

18V POWER **1/4" DRIVE** **5 YEAR WARRANTY**
3 YEAR STANDARD
 +2 FURTHER YEARS WHEN
 REGISTERED ONLINE

Features

- > 5 Drive modes
- > Variable speed trigger
- > LED light
- > Works with all PT18 Batteries
- > Heavy-duty brushless controller actively monitors tool & battery
- > Ergonomic design with durable TPE overmould

Contents

- > 18V Brushless 1/4" Impact Driver
- > Belt hook
- > Manual

Specifications

Voltage	18VDC
No Load Speed	0-2,800 RPM
Max Torque	225 Nm
Impacts Per Minute	0-3,600 BPM
Anvil Size	1/4" Hex
Anvil Type	Quick-release
Weight (No Battery)	1.18kg





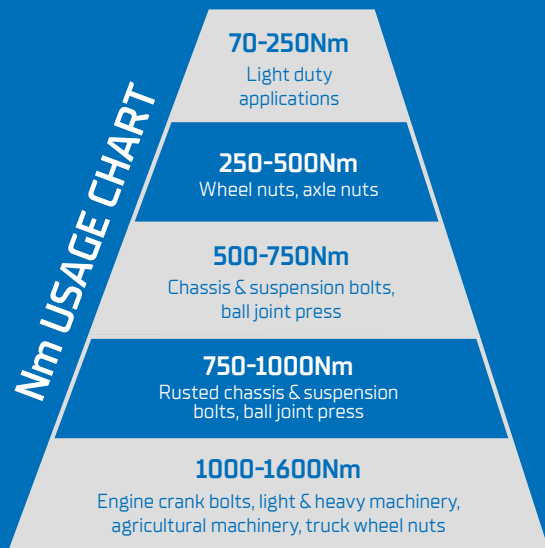
KINCROME PT18 IMPACT WRENCHES

Whether your working on small cars, or large earth moving equipment - Kinchrome PT18 has you covered with an impact wrench fit for purpose.

The range features both 1/2" & 3/4" options, from 370Nm (Good for small equipment) all the way up to 1625Nm (Good for heavy machinery).

All models feature multiple drive modes, LED lights for enhanced visibility in low light situations, and heavy duty brushless motors for long, consistent use and power.

These tools are powerful, comfortable & made for every day trade use.



KINCROME PT18

18V Brushless 1/2" Impact Wrench

370 Nm

K23016

3 YEAR STANDARD
+2 FURTHER YEARS WHEN
REGISTERED ONLINE

Features

- > 5 Drive modes
- > Variable speed trigger
- > LED light
- > Works with all PT18 Batteries

- > Heavy-duty brushless controller actively monitors tool & battery
- > Ergonomic design with durable TPE overmould

Contents

- > 18V Brushless 1/2" Impact Wrench
- > Belt hook

- > Manual

Specifications

Voltage	18VDC
No Load Speed	0-2,800 RPM
Max Torque	370 Nm
Impacts Per Minute	0-3,600 BPM
Anvil Size	1/2" Square
Anvil Type	Friction ring
Weight (No Battery)	1.22kg



KINCROME PT18

18V Brushless 1/2" Mid-Torque Impact Wrench



950 Nm

K23017

Features

- > 5 Drive modes
- > Variable speed trigger
- > LED light
- > Works with all PT18 Batteries
- > Heavy-duty brushless controller actively monitors tool & battery
- > Ergonomic design with durable TPE overmould

Contents

- > 18V Brushless 1/2" Mid-Torque Impact Wrench
- > Belt hook
- > Manual

Specifications

Voltage	18VDC
No Load Speed	0-1,800 RPM
Max Torque	950 Nm
Nut Busting Torque	1,250 Nm
Impacts Per Minute	0-2,600 BPM
Anvil Size	1/2" Square
Anvil Type	Friction ring
Weight (No Battery)	2.38kg



KINCROME PT18

18V Brushless 1/2" High-Torque Impact Wrench



1550 Nm

K23018

Features

- > 5 Drive modes
- > Variable speed trigger
- > LED light
- > Works with all PT18 Batteries
- > Heavy-duty brushless controller actively monitors tool & battery
- > Ergonomic design with durable TPE overmould

Contents

- > 18V Brushless 1/2" High-Torque Impact Wrench
- > Belt hook
- > Manual

Specifications

Voltage	18VDC
No Load Speed	0-1,800 RPM
Max Torque	1,550 Nm
Nut Busting Torque	1,650 Nm
Impacts Per Minute	0-2,300 BPM
Anvil Size	1/2" Square
Anvil Type	Friction ring
Weight (No Battery)	2.88kg



KINCROME PT18

18V Brushless 3/4" High-Torque Impact Wrench



1625 Nm

K23019

Features

- > 5 Drive modes
- > Variable speed trigger
- > LED light
- > Works with all PT18 Batteries
- > Heavy-duty brushless controller actively monitors tool & battery
- > Ergonomic design with durable TPE overmould

Contents

- > 18V Brushless 3/4" High-Torque Impact Wrench
- > Belt hook
- > Manual

Specifications

Voltage	18VDC
No Load Speed	0-1,600 RPM
Max Torque	1,625 Nm
Nut Busting Torque	1,850 Nm
Impacts Per Minute	0-2,300 BPM
Anvil Size	3/4" Square
Anvil Type	Friction ring
Weight (No Battery)	2.91kg



KINCROME PT18
18V Brushless Angle Grinder - Slide Switch

125 mm

K23020

18V POWER **5 YEAR WARRANTY**
3 YEAR STANDARD +2 FURTHER YEARS WHEN REGISTERED ONLINE

Features

- > Slide switch
- > Anti-vibration auxiliary handle
- > Tool-free adjustable guard
- > Works with all PT18 Batteries
- > Heavy-duty brushless controller actively monitors tool & battery
- > Ergonomic design with durable TPE overmould

Contents

- > 18V Brushless 125mm Angle Grinder
- > Anti-vibration auxiliary handle
- > Tool-free adjustable guard
- > Removable cutting guard
- > Flange spanner
- > Manual

Specifications

Voltage	18VDC
No Load Speed	9,000 RPM
Wheel diameter	125mm (5")
Spindle	M14
Switch Type	Slide Switch
Weight (No Battery)	1.56kg



KINCROME PT18
18V Brushless Rotary Polisher

180 mm

K23025

18V POWER **5 YEAR WARRANTY**
3 YEAR STANDARD +2 FURTHER YEARS WHEN REGISTERED ONLINE

Features

- > Locking trigger switch
- > Ergonomic D-handle
- > Safe foam edged backing pad
- > Rubber gearcase cover
- > Works with all PT18 Batteries
- > Variable speed
- > Heavy Duty brushless controller actively monitors tool & battery
- > Ergonomic design with durable TPE overmould

Contents

- > 18V Brushless Rotary Polisher 180mm
- > Backing Pad
- > Anti-vibration auxiliary handle
- > Manual

Specifications

Voltage	18VDC
No Load Speed	800-2,400 RPM
Wheel diameter	180mm (7")
Spindle	M14
Switch Type	Trigger Switch
Weight (No Battery)	1.83kg



KINCROME PT18
18V Grease Gun

500 CC

K23030

18V POWER **5 YEAR WARRANTY**
3 YEAR STANDARD +2 FURTHER YEARS WHEN REGISTERED ONLINE

Features

- > 3 Way Filling - Bulk Fill, Pressure Fill or 450g Cartridge
- > 760mm flexible hose
- > Works with all PT18 Batteries
- > Adjustable shot dial
- > Heavy-duty brushless controller actively monitors tool & battery
- > Ergonomic design with durable TPE overmould

Contents

- > 18V Grease Gun
- > Flexible Hose
- > Shoulder Strap
- > Manual

Specifications

Voltage	18VDC
Max Pressure	9,000psi
Flow rate	200g/min
Capacity	500CC
Cartridge capacity	450g
Weight (No Battery)	3.6kg



KINCROME PT18 18V Digital Heat Gun

550°C Max Temp

K23031

18V POWER **5 YEAR WARRANTY**
3 YEAR STANDARD
*2 FURTHER YEARS WHEN REGISTERED ONLINE

Features

- > 5-second heating time
- > 3 interchangeable nozzles
- > Digital temperature control
- > Works with all PT18 Batteries
- > Nozzle quick-release system
- > Ergonomic design with durable TPE overmould

Contents

- > 18V Digital Heat Gun
- > 3 x Interchangeable nozzles
- > Manual

Specifications

Voltage	18VDC
Maximum Temperature	550°C
Air Flow	200l/min
Run Time 4Ah	15-21 minutes
Weight (No Battery)	1.0kg



KINCROME PT18 18V Workshop Blower

3.5 m³/min

K23032

18V POWER **5 YEAR WARRANTY**
3 YEAR STANDARD
*2 FURTHER YEARS WHEN REGISTERED ONLINE

Features

- > 3-Speed switch
- > Flexible rubber blower tube & extension tube
- > Vacuum function
- > Works with all PT18 Batteries
- > Pivoting head - 90° for vacuuming - 180° for easy storage
- > Ergonomic design with durable TPE overmould

Contents

- > 18V Workshop Blower
- > Blower tube
- > Extension tube
- > Collection bag
- > Manual

Specifications

Voltage	18VDC
Air Speed	0-240 km/h
Air Volume	3.5m ³ /min
No Load Speed	0-18,000 rpm
Run Time 4Ah	Up to 45 minutes
Weight (No Battery)	2.0kg
Noise	92.5 dB



KINCROME PT18 18V LED Worklight

1000 lm

K23035

18V POWER **5 YEAR WARRANTY**
3 YEAR STANDARD
*2 FURTHER YEARS WHEN REGISTERED ONLINE

Features

- > 90° Rotating head
- > Up to 1,000 lumens of light output
- > Strobe mode
- > Works with all PT18 Batteries
- > Pistol grip with trigger switch
- > Ergonomic design with durable TPE overmould

Contents

- > 18V LED Worklight
- > Belt hook
- > Manual

Specifications

Voltage	18VDC
LED Type	COB LED, 6,500K
Wattage	10W
Light output	Low - 750lm, High - 1,000lm
Run Time 2Ah (High/Low)	3.5/7 hours
Run Time 4Ah (High/Low)	4.4/10.5 hours
Run Time 6Ah (High/Low)	6.2/13.5 hours
Weight (No Battery)	0.58kg



KINCROME PT18 18V LED Area Light

2500 lm

K23036



Features

- > 270° Rotating head
- > Up to 2,500 lumens of light output
- > Works with all PT18 Batteries
- > Wall mountable
- > 240V Input

Contents

- > 18V LED Area Light
- > 240V power cable
- > Manual

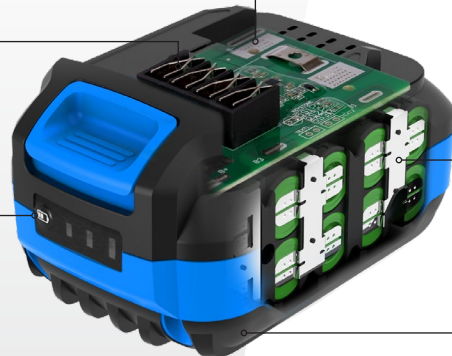
Specifications

Voltage	18VDC / 240V~ 50Hz
LED Type	24W SMD LED, 6,500K
Light output	Low - 1,250lm, High - 2,500lm
IP Rating	IP20
Runtime 2Ah (High/Low)	1.5/3 hours
Runtime 4Ah (High/Low)	2.3/5 hours
Runtime 6Ah (High/Low)	3.5/7 hours
Weight (No Battery)	1kg

Active & passive thermal management systems

Works with Kincrome PT18 18V Power Tools

LED charge indicator



Active cell monitoring & discharge protection

TPE overmoulding for durability



Mounts clip together

Battery mount included

KINCROME PT18 18V Batteries



6Ah

K23052 Specifications

Voltage	Capacity	Cell Type	Charge Time	
			2A Charger	6A Fast Charger
18V	6Ah	Li-Ion	180 Minutes	60 Minutes

4Ah

K23051 Specifications

Voltage	Capacity	Cell Type	Charge Time	
			2A Charger	6A Fast Charger
18V	4Ah	Li-Ion	120 Minutes	45 Minutes

2Ah

K23050 Specifications

Voltage	Capacity	Cell Type	Charge Time	
			2A Charger	6A Fast Charger
18V	2Ah	Li-Ion	60 Minutes	30 Minutes



KINCROME PT18

Battery Charger

18V POWER 3 YEAR WARRANTY

18V

K23055

Features

- > Works with Kincrome PT18 18V Batteries
- > 240VAC input
- > LED charge indicators



Specifications

Nominal Voltage	240V~ 50Hz
Output Voltage	20VDC 2A
2Ah Battery Charge Time	60 Minutes
4Ah Battery Charge Time	120 Minutes
6Ah Battery Charge Time	180 Minutes

KINCROME PT18

Battery Fast Charger

18V POWER 3 YEAR WARRANTY

18V

K23057

Features

- > Works with Kincrome PT18 18V Batteries
- > 240VAC input
- > LED charge indicators



Specifications

Nominal Voltage	240V~ 50Hz
Output Voltage	20VDC 6A
2Ah Battery Charge Time	30 Minutes
4Ah Battery Charge Time	45 Minutes
6Ah Battery Charge Time	60 Minutes





KINCROME PT18

18V Battery & Charger Combo

18V POWER 3 YEAR WARRANTY

2 Piece

K23073

Contents

- > 18V 4Ah Battery
- > 18V Charger



KINCROME PT18

18V Impact Driver Combo

18V POWER 1/4 DRIVE

TOOL WARRANTY 5 YEAR WARRANTY
BATTERY WARRANTY 3 YEAR WARRANTY
3 YEAR STANDARD
+2 FURTHER YEARS WHEN REGISTERED ONLINE

1 Piece

K23066

Contents

- > 18V Brushless 1/4" Impact Driver
- > 18V 4Ah Battery
- > 18V Charger

Specifications - Impact Driver

No Load Speed	0-2,800 RPM
Max Torque	225 Nm
Impacts Per Minute	0-3,600 BPM
Anvil Size	1/4" Hex



KINCROME PT18

18V Impact Wrench Combo

18V POWER 1/2 DRIVE

TOOL WARRANTY 5 YEAR WARRANTY
BATTERY WARRANTY 3 YEAR WARRANTY
3 YEAR STANDARD
+2 FURTHER YEARS WHEN REGISTERED ONLINE

1 Piece

K23067

Contents

- > 18V Brushless 1/2" Impact Wrench
- > 18V 4Ah Battery
- > 18V Charger

Specifications - Impact Wrench

No Load Speed	0-2,800 RPM
Max Torque	370 Nm
Impacts Per Minute	0-3,600 BPM
Anvil Size	1/2" Square



KINCROME PT18

18V Angle Grinder Combo

1 Piece

K23070

18V POWER

TOOL WARRANTY **5 YEAR WARRANTY**
3 YEAR STANDARD +2 FURTHER YEARS WHEN REGISTERED ONLINE

BATTERY WARRANTY **3 YEAR WARRANTY**

Contents

- > 18V Brushless 125mm Angle Grinder
- > 18V 4Ah Battery
- > 18V Charger

Specifications - Angle Grinder

No Load Speed	9,000 RPM
Wheel diameter	125mm (5")
Spindle	M14
Switch Type	Slide Switch



KINCROME PT18

18V Brushless Polisher Combo

1 Piece

K23072

18V POWER

TOOL WARRANTY **5 YEAR WARRANTY**
3 YEAR STANDARD +2 FURTHER YEARS WHEN REGISTERED ONLINE

BATTERY WARRANTY **3 YEAR WARRANTY**

Contents

- > 18V Brushless 180mm Rotary Polisher
- > 18V 4Ah Battery
- > 18V Charger

Specifications - Polisher

No Load Speed	800-2,400 RPM
Wheel diameter	180mm (7")
Spindle	M14
Switch Type	Trigger Switch



KINCROME PT18

18V Brushless Hammer Drill Combo

1 Piece

K23065

18V POWER

TOOL WARRANTY **5 YEAR WARRANTY**
3 YEAR STANDARD +2 FURTHER YEARS WHEN REGISTERED ONLINE

BATTERY WARRANTY **3 YEAR WARRANTY**

Contents

- > 18V Brushless Hammer Drill
- > 18V 4Ah Battery
- > 18V Charger

Specifications - Hammer Drill

Keyless Chuck Size	13mm
Max Torque	100Nm
No Load Speed 1/2	0-500 RPM/0-1,750 RPM
Impact Rate 1/2	0-8,500 BPM/0-29,750 BPM



KINCROME PT18

18V Brushless Mid-Torque Impact Wrench Combo

1 Piece

K23068

18V
POWER

1/2
DRIVE

TOOL WARRANTY
5 YEAR
WARRANTY

BATTERY WARRANTY
3 YEAR
WARRANTY

3 YEAR STANDARD
+2 FURTHER YEARS WHEN
REGISTERED ONLINE

Contents

- > 18V Brushless 1/2" Mid-Torque Impact Wrench
- > 18V 4Ah Battery
- > 18V Charger

Specifications - Mid-Torque Impact Wrench

No Load Speed	0-1,800 RPM
Max Torque	950 Nm
Nut Busting Torque	1,250 Nm
Impacts Per Minute	0-2,600 BPM
Anvil Size	1/2" Square



KINCROME PT18

18V Grease Gun Combo

1 Piece

K23071

18V
POWER

TOOL WARRANTY
5 YEAR
WARRANTY

BATTERY WARRANTY
3 YEAR
WARRANTY

3 YEAR STANDARD
+2 FURTHER YEARS WHEN
REGISTERED ONLINE

Contents

- > 18V Grease Gun
- > 18V 4Ah Battery
- > 18V Charger

Specifications - Grease Gun

Max Pressure	9,000psi
Flow rate	200g/min
Capacity	500CC
Cartridge capacity	450g



KINCROME PT18

18V Brushless Drill & Driver Combo

2 Piece

K23075

18V
POWER

1/4
DRIVE

TOOL WARRANTY
5 YEAR
WARRANTY

BATTERY WARRANTY
3 YEAR
WARRANTY

3 YEAR STANDARD
+2 FURTHER YEARS WHEN
REGISTERED ONLINE

Contents

- > 18V Brushless Hammer Drill
- > 18V Brushless 1/4" Impact Driver
- > 2 x 18V 2Ah Battery
- > 18V Charger
- > Storage Bag

Specifications - Hammer Drill

Keyless Chuck Size	13mm
Max Torque	100Nm
No Load Speed 1/2	0-500 RPM/ 0-1,750 RPM
Impact Rate 1/2	0-8,500 BPM/ 0-29,750 BPM

Specifications - Impact Driver

No Load Speed	0-2,800 RPM
Max Torque	225 Nm
Impacts Per Minute	0-3,600 BPM
Anvil Size	1/4" Hex



KINCROME PT18

18V Brushless Drill & Wrench Combo

2 Piece

K23076

18V
POWER

1/2
DRIVE

TOOL WARRANTY
5 YEAR
WARRANTY
3 YEAR STANDARD
+2 FURTHER YEARS WHEN
REGISTERED ONLINE

BATTERY WARRANTY
3 YEAR
WARRANTY

Contents

- > 18V Brushless Hammer Drill
- > 18V Brushless 1/2" Impact Wrench
- > 2 x 18V 2Ah Battery
- > 18V Charger
- > Storage Bag

Specifications - Hammer Drill

Keyless Chuck Size	13mm
Max Torque	100Nm
No Load Speed 1/2	0-500 RPM/ 0-1,750 RPM
Impact Rate 1/2	0-8,500 BPM/ 0-29,750 BPM

Specifications - Impact Wrench

No Load Speed	0-2,800 RPM
Max Torque	370 Nm
Impacts Per Minute	0-3,600 BPM
Anvil Size	1/2" Square



KINCROME PT18

18V Brushless Wrench & Grinder Combo

2 Piece

K23077

18V
POWER

1/2
DRIVE

TOOL WARRANTY
5 YEAR
WARRANTY
3 YEAR STANDARD
+2 FURTHER YEARS WHEN
REGISTERED ONLINE

BATTERY WARRANTY
3 YEAR
WARRANTY

Contents

- > 18V Brushless 1/2" Impact Wrench
- > 18V Brushless 125mm Angle Grinder
- > 2 x 18V 2Ah Battery
- > 18V Charger
- > Storage Bag

Specifications - Impact Wrench

No Load Speed	0-2,800 RPM
Max Torque	370 Nm
Impacts Per Minute	0-3,600 BPM
Anvil Size	1/2" Square

Specifications - Angle Grinder

No Load Speed	9,000 RPM
Wheel diameter	125mm (5")
Spindle	M14
Switch Type	Slide Switch



KINCROME PT18

18V Brushless Drill, Driver & Grinder Combo

2 Piece

K23085

18V
POWER

1/4
DRIVE

TOOL WARRANTY
5 YEAR
WARRANTY
3 YEAR STANDARD
+2 FURTHER YEARS WHEN
REGISTERED ONLINE

BATTERY WARRANTY
3 YEAR
WARRANTY

Contents

- > 18V Brushless Hammer Drill
- > 18V Brushless 1/4" Impact Driver
- > 18V Brushless 125mm Angle Grinder
- > 2 x 4Ah Battery
- > 18V Fast Charger
- > Storage Bag

Specifications - Hammer Drill

Keyless Chuck Size	13mm
Max Torque	100Nm
No Load Speed 1/2	0-500 RPM/ 0-1,750 RPM
Impact Rate 1/2	0-8,500 BPM/ 0-29,750 BPM

Specifications - Angle Grinder

No Load Speed	9,000 RPM
Wheel diameter	125mm (5")
Spindle	M14
Switch Type	Slide Switch

Specifications - Impact Driver

No Load Speed	0-2,800 RPM
Max Torque	225 Nm
Impacts Per Minute	0-3,600 BPM
Anvil Size	1/4" Hex

KINCROME PT RANGE



Kinchrome's range of PT (240V) Power Tools are designed and developed specifically for the trade professional.

When long run time or power is the priority, Kinchrome PT are the go. With 240V power, they'll work as long as you do. They've been made with extra power in mind too, so have all the grunt you'll need.

Backed by a 5 year trade warranty on all tools, the PT range is ready for the trade.

When you need to get work done without interruption and extended usage, look to Kinchrome PT.





KINCROME PT 240V Angle Grinder - Slide Switch

125 mm

K23220



3 YEAR STANDARD
+2 FURTHER YEARS WHEN
REGISTERED ONLINE

Features

- > Slide switch
- > Anti-vibration auxiliary handle
- > Tool-free adjustable guard
- > Removable cutting guard
- > Variable speed

Contents

- > 240V 125mm Angle Grinder
- > Anti-vibration auxiliary handle
- > Tool-free adjustable guard
- > Removable cutting guard
- > Flange spanner
- > Manual

Specifications

Nominal Voltage	230-240V ~ 50Hz
No Load Speed	3,000-11,000 RPM
Power	900W
Wheel diameter	125mm (5")
Spindle	M14
Weight	2.0kg



KINCROME PT 240V Rotary Polisher

180 mm

K23225



3 YEAR STANDARD
+2 FURTHER YEARS WHEN
REGISTERED ONLINE

Features

- > Locking trigger switch
- > Variable speed
- > Ergonomic D-handle
- > Ergonomic design with durable TPE overmould
- > Rubber gearcase cover
- > Safe foam edged backing pad
- > Locking trigger switch

Contents

- > 18V 180mm Rotary Polisher
- > Backing Pad
- > D-handle
- > Manual

Specifications

Nominal Voltage	220-240V ~ 50Hz
No Load Speed	600-3,500 RPM
Power	1,400W
Wheel diameter	180mm (7")
Spindle	M14
Switch Type	Trigger Switch
Weight	3.15kg



KINCROME PT 240V Digital Heat Gun

650°C Max Temp

K23231



3 YEAR STANDARD
+2 FURTHER YEARS WHEN
REGISTERED ONLINE

Features

- > 5-second heating time
- > 4 interchangeable nozzles
- > Digital temperature & air flow adjustment
- > Ergonomic design with durable TPE overmould

Contents

- > 240V Digital Heat Gun
- > 4 x Interchangeable nozzles
- > Scraper
- > Manual

Specifications

Nominal Voltage	220-240V ~ 50Hz
Maximum Temperature	50-650°C
Air Flow	250-500l/min
Power	2,000W
Weight	1.0kg

KINCROME PTA

LEAVES OTHER BITS IN PIECES

The Kinchrome Power Tool Accessory range (PTA) has been specifically designed in Australia to suit both the professional and DIY user.

Our sets feature the most commonly used bits in a variety of different lengths ranging from 25mm up to 150mm. All sets come in an Australian designed metal tin and feature secure locking bit racks that are clearly marked for easy identification.

Kinchrome PTA bits are manufactured from S2 steel and feature precision CNC machined magnetic tips, oversized torsion zones to improve bit performance and lifetime and our unique bit type colour coding system.

We offer a full range of accessories including Nutsetters, Socket Driver adaptors and Magnetic and Quick Release Magnetic bit couplers all in a variety of sizes from 50mm up to 150mm.



Impact Bits

P/N	Piece	P/N	Piece
K21222	Phillips #1 Impact Bit 50mm 3 Piece	K21379	TORX® T15 Impact Bit 50mm 3 Piece
K21235	Phillips #2 Impact Bit 50mm 3 Piece	K21390	TORX® T20 Impact Bit 50mm 3 Piece
K21243	Phillips #2 Impact Bit 75mm 3 Piece	K21395	TORX® T20 Impact Bit 75mm 3 Piece
K21249	Phillips #2 Impact Bit 150mm 1 Piece	K21405	TORX® T25 Impact Bit 50mm 3 Piece
K21254	Phillips #3 Impact Bit 50mm 3 Piece	K21410	TORX® T25 Impact Bit 75mm 3 Piece
K21263	Square #1 Impact Bit 50mm 3 Piece	K21418	TORX® T27 Impact Bit 50mm 3 Piece
K21275	Square #2 Impact Bit 50mm 3 Piece	K21427	TORX® T30 Impact Bit 50mm 3 Piece
K21283	Square #2 Impact Bit 75mm 3 Piece	K21431	TORX® T30 Impact Bit 75mm 3 Piece
K21289	Square #2 Impact Bit 150mm 1 Piece	K21436	TORX® T40 Impact Bit 50mm 3 Piece
K21321	Hex 3mm Impact Bit 50mm 3 Piece	K21440	TORX® T40 Impact Bit 75mm 3 Piece
K21330	Hex 4mm Impact Bit 50mm 3 Piece	K21505	Magnetic Nutsetter Impact Bit Mixed Pack 65mm 3 Piece
K21334	Hex 4mm Impact Bit 75mm 3 Piece	K21506	Magnetic Nutsetter Impact Bit Mixed Pack 100mm 3 Piece
K21336	Hex 4mm Impact Bit 150mm 1 Piece	K21477	Impact Socket Driver Adaptors 1/4" 50mm 1 Piece
K21342	Hex 5mm Impact Bit 50mm 3 Piece	K21480	Impact Socket Driver Adaptors 3/8" 50mm 1 Piece
K21350	Hex 5mm Impact Bit 75mm 3 Piece	K21483	Impact Socket Driver Adaptors 1/2" 50mm 1 Piece
K21356	Hex 5mm Impact Bit 150mm 1 Piece	K21512	Impact Socket Driver Adaptor Mixed Pack 50mm 3 Piece
K21361	Hex 6mm Impact Bit 50mm 3 Piece	K21486	Magnetic C-Clip Bit Coupler 50mm 1 Piece
K21365	Hex 6mm Impact Bit 75mm 3 Piece	K21498	Quick Release Bit Coupler 50mm 1 Piece
K21367	Hex 6mm Impact Bit 150mm 1 Piece	K21521	Phillips #2 & Hex 5mm Impact Bit Mixed Pack 50mm 5 Piece

Impact Bit Sets



KINCROME PTA

Impact Bit Set

33 Piece



K21019 > Size: 70 x 50 x 30mm

Bits 25mm:

Phillips: 2 x PH1, 4 x PH2, 2 x PH3
Hex: 2mm, 2.5mm, 3mm, 2 x 4mm, 2 x 5mm, 6mm
Square: SQ1, 3 x SQ2, SQ3
TORX®: T10, T15, 2 x T20, 2 x T25, T27, T30, T40
Blade: 4.5mm, 6.5mm

Accessories

Magnetic C-clip coupler



KINCROME PTA

Impact Bit Set

35 Piece



K21000 > Size: 160 x 85 x 40mm

25mm Impact Bits

Phillips: 2 x PH1, 3 x PH2, 2 x PH3
Hex: 2mm, 2.5mm, 3mm, 4mm, 2 x 5mm, 6mm
Blade: 4mm, 6.5mm
TORX®: T10, T15, T20, T25, T27, T30, T40
Square: SQ1, SQ2, SQ3, SQ3

50mm Impact Bits

Phillips: 2 x PH2
Hex: 2 x 5mm Square: 2 x SQ2

Accessories

Magnetic Bit Coupler Extreme 50mm



KINCROME PTA

Impact Bit Set

41 Piece



K21002 > Size: 160 x 85 x 40mm

25mm Impact Bits

Phillips: 2 x PH1, 3 x PH2, 2 x PH3
Hex: 3mm, 4mm, 5mm, 6mm
TORX®: T10, T15, T20, T25, T27, T30, T40
Square: SQ1, SQ2, SQ3

50mm Impact Bits

Phillips: 6 x PH2
Hex: 2 x 5mm, 2 x 6mm
TORX®: T20, T25, T27, T30
Square: 2 x SQ2, SQ3

Accessories

Magnetic Bit Coupler Quick Release 50mm
Magnetic Bit Coupler Extreme 50mm



KINCROME PTA

Impact Bit Set

36 Piece



K21003 > Size: 160 x 85 x 40mm

25mm Impact Bits

Phillips: PH1, 2x PH2, PH3
Hex: 2mm, 2.5mm, 3mm
Blade: 6.5mm
TORX®: T10, T15, T20, T25
Square: 2 x SQ2, 1 x SQ3

TORX®: 2 x T20, 2 x T25
Square: SQ2, SQ2, SQ3

Accessories

Magnetic Bit Coupler Quick Release 50mm
Magnetic Bit Coupler Extreme 50mm
Magnetic Nutsetters 50mm: 1/4", 5/16", 3/8"
Socket Driver Adaptor 50mm: 1/4", 3/8", 1/2"

50mm Impact Bits

Phillips: 3 x PH2, PH3
Hex: 3 x 5mm



KINCROME PTA

Impact Bit Set

44 Piece



K21014 > Size: 200 x 105 x 45mm

25mm Impact Bits

Phillips: PH1, PH3
Hex: 2mm, 3mm, 4mm, 5mm, 6mm
TORX®: T10, T15, T20, T25, T27, T30, T40
Blade: 4mm, 6.5mm
Square: SQ1, SQ3

TORX®: 3 x T20, 3 x T25
Square: 3 x SQ2

150mm Impact Bits

Phillips: 2 x PH2
Hex: 2 x 5mm
Square: 2 x SQ2

Accessories

Magnetic Bit Coupler Extreme 75mm
Magnetic Bit Coupler Quick Release 75mm



KINCROME PTA DRILLING RANGE

The Kinchrome Power Tool Accessory Drilling Range (PTA) has been specifically designed in Australia to suit the trade professional, whilst still being great for the DIY user.

Our Spiral Step Drills are made from M2 high speed steel with a TiAlN coating for clean, consistent cuts in a professional setting. They are good for drilling steel, plastic & fibreglass. Available in either a 3 flat shank or 1/4" Hex drive for your specific application.

Our HSS Drill Bit Sets are available in a variety of different configurations depending on your needs & come in a handy storage case for protection and storage on the worksite. Manufactured from M2 high speed steel & featuring 135° Split point tips to reduce wandering when drilling you can expect consistent drilling when you need it, day in day out.

Our Bi-Metal Hole Saw Sets are available in a couple of different configurations depending on your specific needs. They come in a sturdy plastic protection case for easy and safe storage on the worksite. Manufactured from M42 Bi-Metal Cobalt High Speed Steel & featuring a quick release arbor & large ejection ports, these are made for drilling consistent clean holes. They are good for drilling into steel, plastic or wood, making them a valuable tool for all sorts of drilling.

MANUFACTURED FROM BI-METAL COBALT HIGH SPEED STEEL (M42)

LARGE EJECTION PORTS



QUICK-RELEASE ARBOR

Spiral Step Drills



Features

- > Dual-spiral flute design
- > M2 High Speed Steel (HSS)
- > Titanium Aluminium Nitride (TiAlN) coating
- > 3 Flat Shank - Suitable for use with drills and drill presses
- > 1/4" Hex - Suitable for use with impact drivers

Part Number	Pieces	Step Sizes	Drive
K21830	1	4-12mm	1/4" Hex
K21831	1	4-20mm	1/4" Hex
K21832	1	4-30mm	1/4" Hex
K21833	1	6-36mm	3-flat
K21836	3	4-12, 4-20, 4-30mm	1/4" Hex

HSS Drill Bit Sets



Features

- > Manufactured from M2 high speed steel (HSS)
- > 135° Split point tips to reduce wandering when drilling
- > Fully ground flute for efficient chip removal
- > Complies with DIN338 standards

Part Number	Pieces	Contents	Drive
K21842	7	1.5, 2.0, 3.0, 4.0, 5.0, 5.5, 6.0mm	Metric
K21840	5	4.0, 5.0, 6.0, 8.0, 10mm	Metric
K21843	10	1.0, 2.0, 3.0, 4.0, 5.0, 6.0, 7.0, 8.0, 9.0, 10.0mm	Metric
K21845	24	1.0, 1.5, 2.0, 2 x 2.5, 2 x 3.0, 2 x 3.5, 2 x 4.0, 4.5, 2 x 5.0, 5.5, 6.0, 6.5, 7.0, 7.5, 8.0, 8.5, 9.0, 9.5, 10.0mm	Metric

Bi-Metal Hole Saw Sets



Features

- > Manufactured from Bi-Metal Cobalt High Speed Steel (M42)
- > 48mm cutting depth
- > Quick-release arbor
- > Blow mould storage case
- > Large ejection ports

Part Number	Pieces	Contents
K21917	5	5 x Hole saws - 22, 25, 32, 38, 54mm 2 x Arbor's 2 x Spare pilot drill bits Hex Key
K21918	11	11 x Hole saws - 16, 19, 22, 25, 29, 32, 35, 38, 44, 51, 54mm 2 x Arbor's 2 x Spare pilot drill bits Hex Key

KINCROME IMPACT SOCKET SETS



Make sure your workshop has the best quality tools - Kinchrome's range of impact socket sets are durable, reliable, and get the job done every day. Our Impact Socket Sets come in imperial and metric measurements, as well as a variety of specialty measurements.

Kinchrome's range of impact sockets are manufactured from Chrome Molybdenum (Cr-Mo) which is designed to hold up to the shock and vibrations that come from impact tools. Where normal sockets would fail and shatter, you can depend on Kinchrome's Impact sockets.

They feature a black phosphate finish for superior corrosion protection, laser etching for easy drive size identification and Peripheral Drive™ technology. Peripheral Drive™ provides greater torque by relocation the load to the flat sides of a fastener, this allows for greater surface area contact and prevents "rounding off" of fasteners.

We have a full range of accessories to complement the sockets, including extension bars, uni joints & adaptors.

For durable tools you can rely on, explore our ranges and add Kinchrome's Impact Socket Sets to your workshop.



LARGE INK
FILLED SIZES

SOCKET TYPE
COLOUR RING

Impact Socket & Accessory Sets



KINCROME

Wheel Nut Impact Socket Set

4 Piece

K2180



METRIC

Features

- > "Super Impact" Sockets are Torque Tested to 500nm over 2,600+ repetitions before failure (4.5x MORE Nm than the average standard application of wheel impact socket)
- > Colour coded wheel protection sleeves for easy size identification & to protect wheels from scratches
- > Plastic retainer to protect wheel nut inside socket
- > Includes Power Ring

Contents

- > 17mm **BLUE**
- > 19mm **YELLOW**
- > 21mm **RED**
- > 22mm **GREEN**



KINCROME

Deep Impact Socket Set

14 Piece

K28206



METRIC

Features

- > 6 Point Hex Sockets
- > Sockets manufactured from Chrome Molybdenum (Cr-Mo)
- > Features EVA Foam Trays marked for easy tool identification and to hold tools securely in place.
- > Supplied in a Protective Metal Tin

Contents

- > 14 x 1/2" Drive Metric Deep Impact Sockets: 10, 12, 13, 14, 15, 16, 17, 18, 19, 21, 22, 23, 24, 27mm



KINCROME

Hex Impact Socket Set

10 Piece

K28210



METRIC

Features

- > 6 Point Hex Sockets
- > Sockets manufactured from Chrome Molybdenum (Cr-Mo)
- > Features EVA Foam Trays marked for easy tool identification and to hold tools securely in place.
- > Supplied in a Protective Metal Tin

Contents

- > 10 x 1/2" Drive Hex Impact Sockets: 5, 6, 7, 8, 9, 10, 12, 14, 17, 19mm



KINCROME

TORX® Impact Socket Set

10 Piece

K28212



TORX®

Features

- > Sockets manufactured from Chrome Molybdenum (Cr-Mo)
- > Features EVA Foam Trays marked for easy tool identification and to hold tools securely in place.
- > Supplied in a Protective Metal Tin

Contents

- > 10 x 1/2" Drive TORX® Impact Sockets: T20, T25, T27, T30, T40, T45, T50, T55, T60, T70



KINCROME

Impact Accessory Set

6 Piece

K28215



Features

- > Manufactured from Chrome Molybdenum (Cr-Mo)

Contents

- > Universal Joint
- > Impact Adapter 1/2" F to 3/8" M
- > Impact Adapter 1/2" F to 3/4" M
- > 3 x Impact Extension Bars: 75, 150 & 250mm



KINCROME PTA POLISHING RANGE

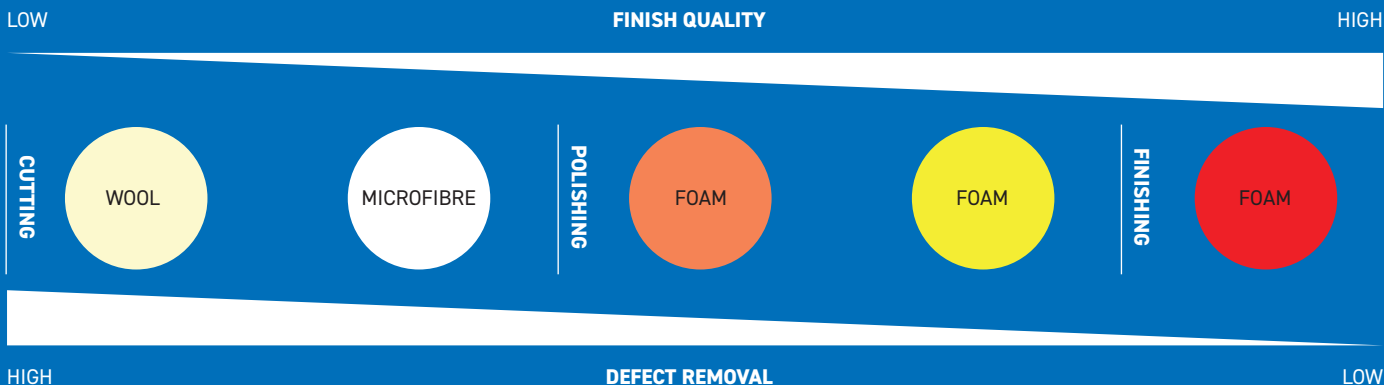
Kinchrome's range of PTA polishing accessories is designed and developed for everyone from the weekend warrior to the trade professional.

Covering the complete polishing process from heavy cutting down to fine finishing, Kinchrome PTA polishing accessories are durable & reliable. We use only the best materials, including Australian Wool and German foam on selected pads. With our polishing range, you know you're getting the best quality finish you can.

Ideal for use with Kinchrome PT and PT18 polishers, Kinchrome PTA polishing accessories are perfect for all jobs big and small, and ensure every task is completed with ease.

When you need to get work done & get it done well, look to Kinchrome PTA.

CUTTING, POLISHING & FINISHING INFORMATION



CUTTING

- WOOL
- MICROFIBRE

POLISHING

- FOAM
- FOAM

FINISHING

- FOAM

Polishing Pads - 180mm [7"]

German foam with honeycomb groove design for even compound distribution and fast heat dissipation



High quality Australian wool offers maximum cut strength and durability

Microfiber material features thousands of individual fibers for improved cut strength and speed



Range Features

- > Hypotenuse edge for increased surface area and added impact protection
- > Ideal for use with Kincrome PT & PT18 Polishers
- > Use in conjunction with suitable compounds, polishes, waxes and sealants.

K211005 Extreme Cut Wool Polishing Pad

- > Extreme cutting action suitable for removal of deep scratches, swirl marks, heavy oxidation and overspray

K211006 Heavy Cut Microfiber Polishing Pad

- > Heavy cutting action suitable for removal of deep scratches, swirl marks, moderate oxidation and overspray

K211001 Medium Cut Foam Polishing Pad

- > Medium cutting action suitable for removal of moderate scratches, swirl marks and light oxidation

K211000 Light Cut Foam Polishing Pad

- > Light cutting action suitable for removal of minor scratches and swirl marks

K211002 Finishing Foam Polishing Pad

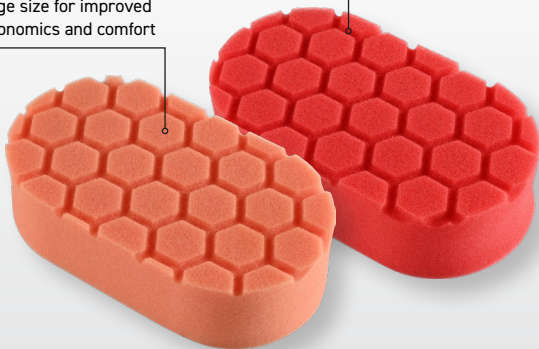
- > Very light cleaning action suitable for removal of fine swirl marks and hazing, or application of protective coatings

Part Number	Piece	Application	Colour
K211005	1	Cutting	Yellow
K211006	1	Cutting	Orange
K211001	1	Polishing	Red
K211000	1	Polishing	White
K211002	1	Finishing	Light Grey
K211009	4	Cutting, Polishing & Finishing	White, Orange, Yellow, Red

Hand Applicators

Honeycomb groove design for even compound distribution

Large size for improved ergonomics and comfort



Range Features

- > Use in conjunction with suitable compounds, polishes, waxes and sealants.

K211003 Medium Cut Foam Hand Applicator

- > Medium cutting action suitable for removal of moderate scratches, swirl marks and light oxidation

K211004 Finishing Foam Hand Applicator

- > Very light cleaning action suitable for removal of fine swirl marks and hazing, or application of protective coatings

K211007 2pc 400GSM Microfiber Cloth Set

- > Suitable for general cleaning and removal of compound, polish, wax and sealant residue

K211008 2pc 800GSM Microfiber Cloth Set

- > Suitable for application of spray waxes & detailers as well as final wiping of detailed surfaces

Part Number	Piece	Size	Application	Colour
K211003	1	150x90mm	Polishing	Orange
K211004	1	150x90mm	Finishing	Red
K211010	4	150x90mm	Polishing & Finishing	Orange, Red
K211007	2	400x400mm	Finishing	Blue
K211008	2	400x400mm	Finishing	Blue

Power Tools

3+2 WARRANTY - TOOL REGISTRATION



3 YEAR STANDARD
+2 FURTHER YEARS WHEN
REGISTERED ONLINE

**PURCHASE
TOOL SKIN**

STANDARD **3 YEAR**
WARRANTY

**REGISTER
ONLINE**

ADDITIONAL **2 YEAR**
WARRANTY



TO REGISTER YOUR TOOLS, HEAD TO
[HTTPS://WWW.KINCROME.COM.AU/TOOL-REGISTRATION](https://www.kincrome.com.au/tool-registration)

WARRANTIES

**LIFETIME
GUARANTEE**

TOOL WARRANTY

**5 YEAR
WARRANTY**

3 YEAR STANDARD
+2 FURTHER YEARS WHEN
REGISTERED ONLINE

BATTERY WARRANTY

**3 YEAR
WARRANTY**

Our goods and services come with guarantees that cannot be excluded under the Australian Consumer Law. For major failures with the service, you are entitled: -to cancel your service contract with us; and -to a refund for the unused portion, or to compensation for its reduced value. You are also entitled to choose a refund or replacement for major failures with goods. If a failure with the goods or a service does not amount to a major failure, you are entitled to have the failure rectified in a reasonable time. If this is not done you are entitled to a refund for the goods and to cancel the contract for the service and obtain a refund of any unused portion. You are also entitled to be compensated for any other reasonably foreseeable loss or damage from a failure in the goods or service. Kinchrome Australia Pty Ltd of 3 Lakeview Drive, Caribbean Park, Scoresby, Victoria (Tel 1300 657 528) also provides the Kinchrome Limited Lifetime Guarantee, 5 Year Warranty, 5 Year (3+2) warranty, 3 Year Warranty, 2 Year Warranty and 12-Month Warranty (Kinchrome Express Warranties) in respect of some of its products. If a product is covered by a Kinchrome Express Warranty and it has materials or workmanship defects (other than defects caused by abnormal or non warranted use) which are covered under the terms of the relevant Kinchrome Express Warranty, you can, at your cost, send the product to the above address for repair or replacement. Your rights under a Kinchrome Express Warranty are in addition to any other rights you have under the Australian Consumer Law or other applicable laws. For further details and terms please check our product guide, visit www.kincrome.com.au or call us. Every effort is made to ensure advertised stock is available, but due to factors beyond the control of Kinchrome Australia Pty. Ltd, not all products advertised in this catalogue may be available at all stores. Kinchrome Australia Pty. Ltd. reserves the right to correct printing errors. All sizes shown are approximate only. Accessories shown do not come with the product unless otherwise specified. Due to printing process, colours in this catalogue may vary slightly to actual item. E. & O. E.© Copyright 2024. Reproduction in whole or in part is prohibited without written approval.



VICTORIA**HEAD OFFICE**

3 Lakeview Drive
Caribbean Business Park
Scoresby, Vic, 3179
Australia
P.O Box 135
Ferntree Gully, Vic, 3156
Australia
Phone: (03) 9730 7100
Fax: (03) 9730 7199

QUEENSLAND**WAREHOUSE**

47-53 Boundary Road
Carole Park, QLD 4300
Phone: 1300 657 528
Fax: 1300 556 005

WESTERN AUSTRALIA**WAREHOUSE**

34 Barley Place
Canning Vale, WA 6155
Phone: 1300 657 528
Fax: 1300 566 005

A.B.N 41 007 185 006 A.C.N 007 185 006

CUSTOMER SERVICE

Phone: 1300 657 528
Fax: 1300 566 005
Email: enquiries@kincrome.com.au